

# BioStar 1.x IP Access Control and Time and Attendance Software

BioStar is a comprehensive access control and time and attendance management software featuring TCP/IP-based system architecture with intelligent IP devices and terminals. It supports a wide range of third-party devices and integration with other business systems. It is the optimal solution that results in cost reduction and flexibility in design.

## Advanced Access Control

BioStar SE offers key features that allow users to extend the system beyond conventional access control. BioStar SE supports advanced access control zones and a powerful visual map, and lift management for control of up to 120 floors. Camera Integration provides visual log capabilities for a convenient merger of video surveillance and access control.

### Zone Management

- Fire alarm, alarm, anti-passback, entrance limit, interlock, muster and access zones
- Controls up to 32 advanced zones
- Customizable alarm settings for each zones
- View event log for selected zones

### IP Camera & NVR Integration

- Real-time video monitoring
- Still image capturing
- Control of PTZ cameras
- Video log search through NVR

### Lift Management

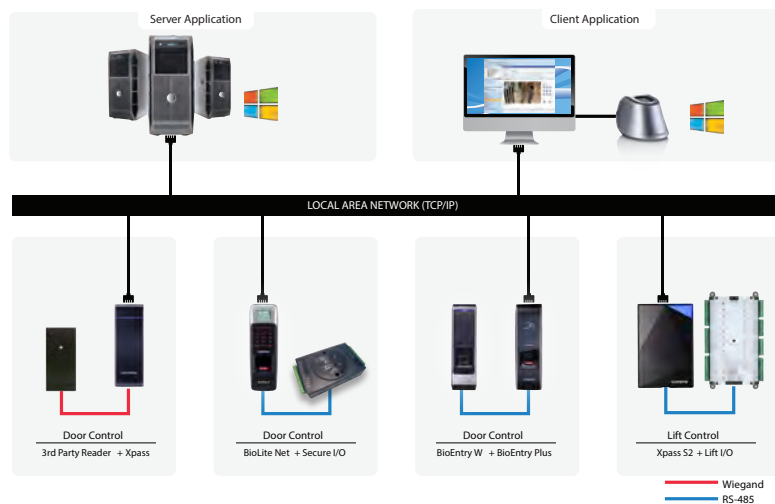
- Control up to 120 floors
- Configurable per floor and user
- Dedicated Lift I/O module support

### Device Management

- Configure AC devices & I/O peripherals
- Server matching (Biometric)
- Real-time monitoring of device connection
- Wizard-type device search interface
- Easy firmware upgrade and reset

### Visual Map Interface

- Graphical representation of the system
- Device/door settings modifications from the map
- Real-time monitoring on the map
- Event notifications in graphic icons
- Monitoring interface for doors and zones



## Software editions

### BioStar Basic Edition

BioStar 1.x Basic Edition is an ideal solution for small to medium sized enterprises. The software covers up to 20 devices and supports integration with various database systems, event monitoring, T&A management and reporting features.

### BioStar Standard Edition

BioStar 1.x Standard Edition offers powerful and comprehensive access control features for full scale applications. Standard Edition controls up to 512 access control devices with IP camera/NVR integration, anti-passback, muster zone, e-mail notification and visual maps.



## Time and Attendance features

BioStar SE includes features that allow administrators to define time categories, shifts, daily schedules and zones holidays. BioStar SE can administer employees to comply with check-in and check-out procedures, restrict access to off-duty personnel and generate attendance report. BioStar SE's Time & Attendance features also give administrators the ability to generate a variety of reports.

### Work Hour Calculation

- User-defined time category configurations
- Daily working schedule configuration
- Overtime calculation
- Rounding & Grace

### Shift, Holiday & Leave Management

- Daily and Weekly cycle scheduling
- Multiple shift rules per user
- Holiday Schedule configurable per group
- Leave schedule configurable per user

### Reporting/Monitoring

- Daily/Individual summary and report
- Report by TA result (such as absence or late)
- Work hour displayed by time category
- CSV Export capability
- Real-time monitoring by T&A event



## Distributed IP Access Control

BioStar is Suprema's access control system based on IP connectivity and biometric security. Suprema devices work not only as a reader for multiple types of credentials, but also as an intelligent controller removing the need for a traditional controller.

### User Management

- Four department levels
- Intuitive user search interface
- Multi-level administrator settings
- Customized authentication mode per user
- Biometric and card credentials

### Access Control

- Control up to 128 access groups
- Control up to 128 time schedules
- Up to 32 configurable holidays

### Door Management

- Four door group levels
- Control up to 512 doors
- Alarm features for each door



## Specifications

|                 |                           | BioStar BE           | BioStar SE   |
|-----------------|---------------------------|----------------------|--|
| System          | License                   | Free                 | USB Dongle   |
|                 | System Architecture       | Client/Server        | Client/Server  |
|                 | Operating System          | Windows              | Windows  |
|                 | DB                        | MSSQL, MySQL, Oracle | MSSQL, MySQL, Oracle                                   |
|                 | Server Matching           | N/A                  | Yes  |
|                 | Max Device                | 20                   | 512  |
|                 | Concurrent Client PC      | 2                    | 32   |
| Access Control  | Time Schedule             | 128                  | 128  |
|                 | Access Group/Level        | 128                  | 128  |
|                 | Max Access Group per User | 4                    | 4  |
|                 | Door                      | 20                   | 512  |
|                 | Template on Card          | Yes                  | Yes  |
|                 | Zone                      | N/A                  | APB, Entrance limit, Alarm, Access, Fire alarm, Muster |
|                 | Email Notification        | N/A                  | Yes  |
|                 | Roll Call                 | N/A                  | Yes  |
|                 | Visual Map                | N/A                  | Yes  |
|                 | Event Monitoring          | Yes                  | Yes  |
|                 | IP Camera                 | N/A                  | Yes  |
|                 | NVR Integration           | N/A                  | Yes  |
| Time Attendance | Lift Management           | N/A                  | Yes (Up to 120 floors)                                 |
|                 | Work time Calculation     | Yes                  | Yes  |
|                 | Shift Management          | Weekly               | Daily / Weekly   |
|                 | Holiday/Leave Management  | Yes                  | Yes  |
|                 | Report                    | Yes                  | Yes  |
|                 | In/Out Board              | N/A                  | Yes  |

## List of Compatible Devices & Accessories

- FaceStation
- BioStation T2
- BioStation
- BioLite Net
- BioEntry W
- BioEntry Plus
- X-Station
- Xpass S2
- Xpass
- BioMini
- Secure/O
- Lift I/O

